

Vertical Pillar Boxes / Signholders Installation Rx Forward Fixtures



Vertical pillar boxes or signholders are commonly used for displaying signs, advertisements, or information in various indoor and outdoor settings. This installation guide will provide you with step-by-step instructions to properly install vertical pillar boxes or signholders to ensure stability and visibility.

Table of Contents

1.	Installation Instruction Guidelines	Pg. 2
2.	Vertical Pillar Boxes and Assembly Tips	Pg. 3
3.	Bill of Materials	Pg. 4
4.	Signholders Dimension.....	Pg. 6
5.	Signholders Dimension.....	Pg. 6
6.	Signholders Installation Step 1.....	Pg. 7
7.	Signholders Installation Step 2.....	Pg. 8
8.	Signholders Installation Step 3.....	Pg. 9
9.	Signholders Installation Step 4.....	Pg. 10
10.	Signholders Installation Step 5.....	Pg. 11
11.	Completed Installation	Pg. 11

Installation Instruction Guidelines

Installing Vertical Pillar Boxes or Signholders within Rx Forward Fixtures necessitates meticulous adherence to procedural nuances. This instructional manual delineates a sequential protocol, emphasizing both precision and safety during implementation.

Site Preparation

- **Clear the Area:** Remove any obstructions or items that might interfere with the installation.
- **Check the Wall:** Ensure the wall is free from any damage or irregularities that might affect the installation.
- **Gather Tools and Materials:** Have all your tools and materials within reach to ensure a smooth installation process.

[Photo: A well-prepared installation site]

Assembly Steps

1. Choose a Location

Decide where you'd like to install the Vertical Pillar Boxes / Signholders.

Ensure the chosen location is free from any obstructions.

[Photo: A chosen location without any obstructions]

2. Mark the Installation Points

Hold the Vertical Pillar Box or Signholder against the wall.

Using a pencil or marking tool, mark the wall through the fixture's mounting holes.

3. Drill Holes

Select the appropriate drill bit size for the screws or wall anchors you will be using.

Drill holes where you marked the installation points in Step 2.

If you're drilling into drywall and require wall anchors, insert them now.

[Photo: Drilling holes into the wall]

Tips for Installation

Safety First: Always wear safety goggles and gloves when drilling or handling tools.

Wall Type: Be aware of the type of wall you are drilling into. Different wall types (drywall, brick, concrete) might require different tools and fasteners.

Additional Support: For larger or heavier Vertical Pillar Boxes or Signholders, you might consider using additional brackets or supports to ensure they stay securely in place.

4. Align and Install

Hold the Vertical Pillar Box or Signholder against the wall, aligning its holes with the drilled points.

Using the screws, secure the fixture to the wall. Ensure all screws are tight but be careful not to overtighten.

[Photo: Securing the fixture with screws]

Vertical Marketing Boxes / Signholders

Rx Forward Fixtures

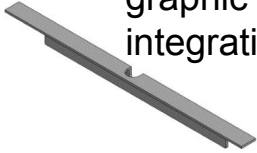


WIC No.: xxx-xxx-xxx
Part No./DWG No.: xxx-xxx-xxx

Exploded View

Top cap

Detachable for
graphic
integration.



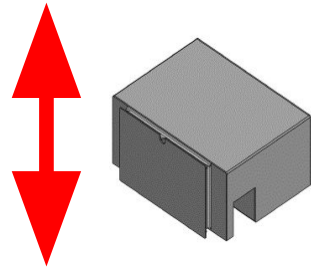
Signholder

Top-down graphic
insertion.



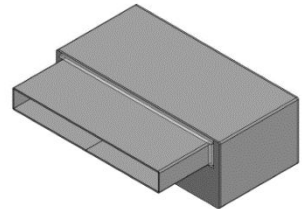
Top box

Adjustable via rear
signholder channels.



Bottom box

Secured to
signholder base.



Assembly Tips:

- **Starting Point:** Begin by attaching the bottom box to the signholder to ensure stability during the rest of the assembly.
- **Graphics Insertion:** Before adding the top box, insert the desired graphics through the top of the signholder. Ensure they sit flat and are clearly visible.
- **Top Box Adjustment:** Slide the top box into the desired position using the channels on the back of the signholder. Secure it once the desired position is reached.
- **Finishing Touch:** Once everything is assembled, cap the signholder with the top cap to give a finished look.

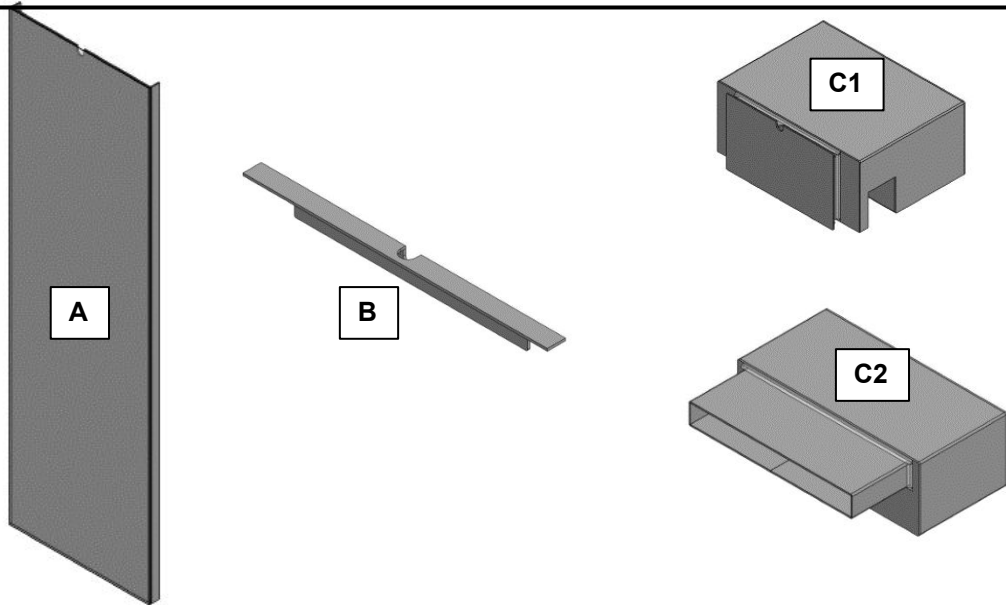
Vertical Marketing Boxes / Signholders

Rx Forward Fixtures



WIC No.: xxx-xxx-xxx
Part No./DWG No.: xxx-xxx-xxx

Bill of Materials



Item	Description	Overall Dimensions	Material	Qty	Component Image
A	Signholder 1	48" T x 15" W x 12" D	0.118 White HIPS	1	
A	Signholder 2	55" T x 15" W x 12" D	0.118 White HIPS	1	
A	Signholder 3	69" T x 15" W x 12" D	0.118 White HIPS	1	
B	Top Cap	14.75" W x 1.25" D	0.118 White HIPS	1	
C1 C2	Top Box C1 Bottom Box C2	Top C1 15" W x 12" D x 6.5" T Bottom C2 15" W x 12" D x 5.25" T	0.118 White HIPS	1 1	

Vertical Pillar Boxes / Signholders

Installation



Rx Forward Fixtures

WIC No.: xxx-xxx-xxx

Part No./DWG No.: xxx xxx xxx

1. Content Inspection Protocol

- 1.1 Thoroughly inspect all cartons and pallets for signs of damage or incorrect labeling.
- 1.2 Carefully scrutinize the contents and items for any signs of damage.
- 1.3 Verify the contents, items, and their respective quantities for accuracy.

In the event of damaged contents or missing components, please promptly reach out to Bruegmann USA at 888-745-9229.

2. Safety Warnings

- 2.1 Each component is supplied with mounting hardware, including pre-attached magnetic strips.
- 2.2 It is the responsibility of the qualified installer to assess the prevailing conditions and select the suitable hardware for installation.

3. Tools Required

- 3.1 To complete this installation, you will need vertical pillar boxes/signholders, a measuring tape, a level tool, a drill with appropriate-sized drill bits, screws, anchors (if necessary for the wall type), a pencil or marking tool, safety goggles, and gloves.
- 3.2 This installation requires the presence of two individuals for proper execution.

4. Site Preparation

- 4.1 Before proceeding, clear the shelves at the intended installation location of all merchandise.
- 4.2 Thoroughly clean the installation area by wiping away any accumulated dust or soil.

CAUTION!

Non-adherence to the prescribed guidelines within this installation manual may potentially engender an environment fraught with safety hazards, not only for the installer but also for the structural integrity of the Display Fixture.

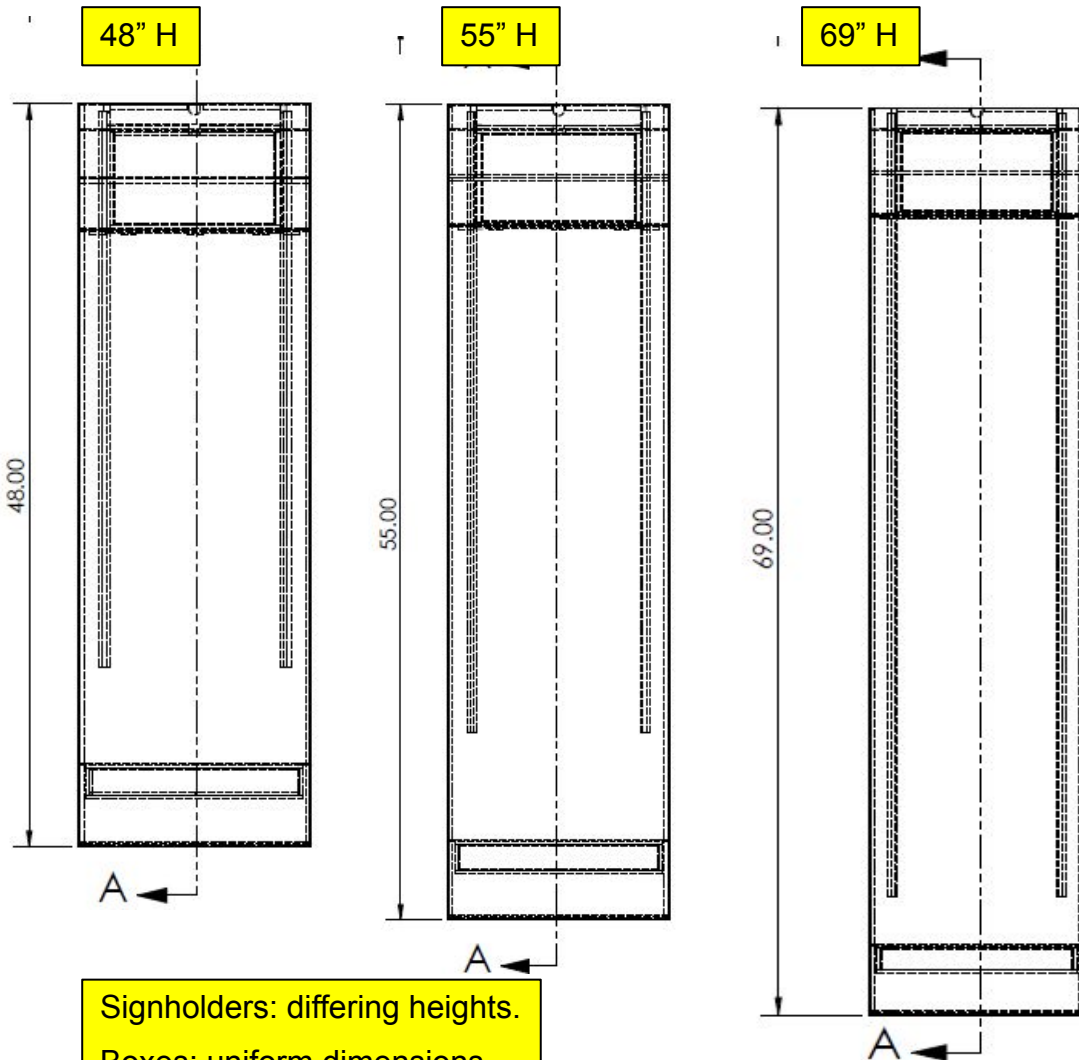
Assembly of Display Fixture

Vertical Marketing Boxes / Signholders

Rx Forward Fixtures

WIC No.: xxx-xxx-xxx

Part No./DWG No.: xxx-xxx-xxx



Signholders: differing heights.
Boxes: uniform dimensions.

Item/Part #	Dimensions
113998	Box 15" W x 6.5" H Signholder 15" W x 48" H
114730	Box 15" W x 6.5" H Signholder 15" W x 55" H
114731	Box 15" W x 6.5" H Signholder 15" W x 69" H

Vertical Marketing Boxes / Signholders

Walgreens

Rx Forward Fixtures
WIC No.: xxx-xxx-xxx
Part No./DWG No.: xxx-xxx-xxx

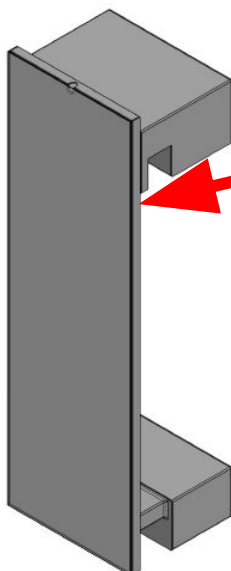
Installation

Step 1: A Two-Individual Operation

Open the primary carton attentively, extracting both the supporting inclusions and the securing blue tape.

Proceed to securely elevate the fixture from its container, positioning it in an upright manner; note the immovability of the lower compartment – it maintains a fixed position attached to the sign holder, whereas the superior compartment offers adjustability to accommodate various shelf vertical spacings.

Prioritize the secure and leveled alignment of all shelves, verifying their correct engagement within the designated upright slots before initiating the installation of this fixture.



The top box allows for vertical adjustments.

Box: immovable.

Vertical Marketing Boxes / Signholders

Rx Forward Fixtures

WIC No.: xxx-xxx-xxx

Part No./DWG No.: xxx-xxx-xxx



Installation

Step 2 This is 2-person process

Align the bottom box with the bottom shelf and the top box with the top shelf.



Vertical Marketing Boxes / Signholders

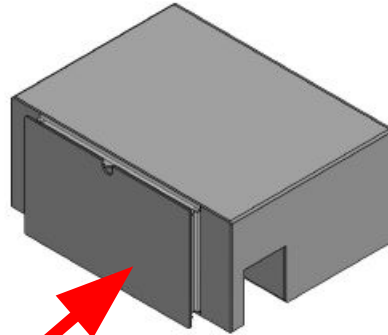
Rx Forward Fixtures

Walgreens

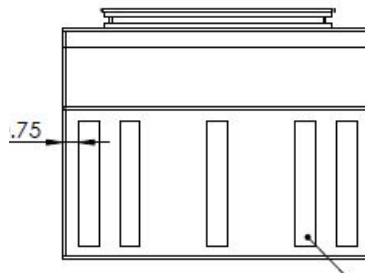
Installation

Step 3: Top Box Alignment and Magnetic Strip Engagement

Commence with the vertical modulation of the upper box to facilitate alignment with the superior shelf. Ensure activation of the magnetic interaction between the strip situated beneath the box and the designated shelf surface.



The front panel of the box interfaces with vertical channels to enable vertical adjustments.



Magnetic strips

The bottom box remains stationary.

Vertical Marketing Boxes / Signholders

Rx Forward Fixtures

WIC No.: xxx-xxx-xxx

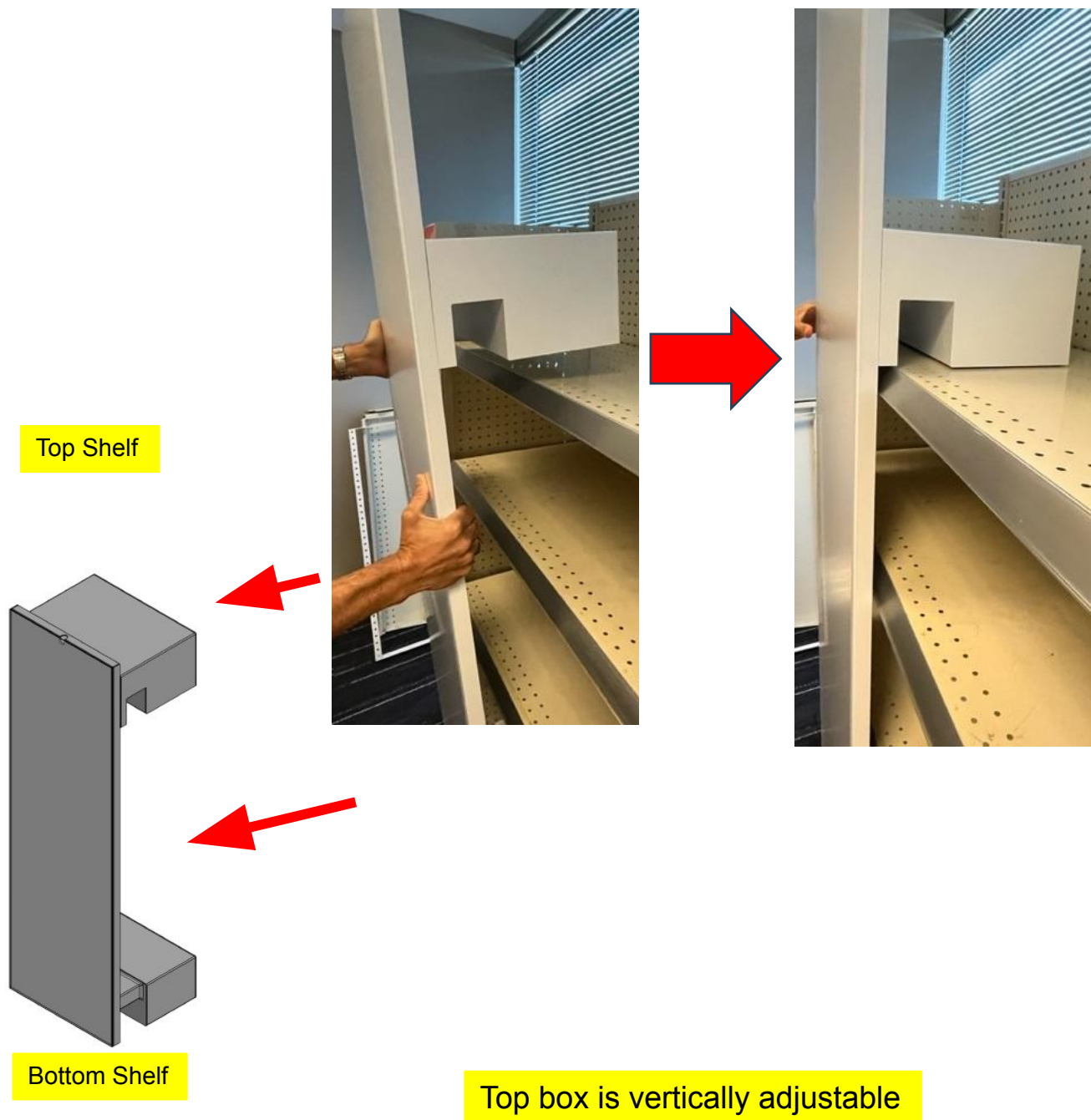
Part No./DWG No.: xxx-xxx-xxx

Walgreens

Installation

Step 4 This is 2-person process

When the top box is installed position the signholder flat against all the shelves



Vertical Marketing Boxes / Signholders

Rx Forward Fixtures

WIC No.: xxx-xxx-xxx

Walgreens

Part No./DWG No.: xxx-xxx-xxx

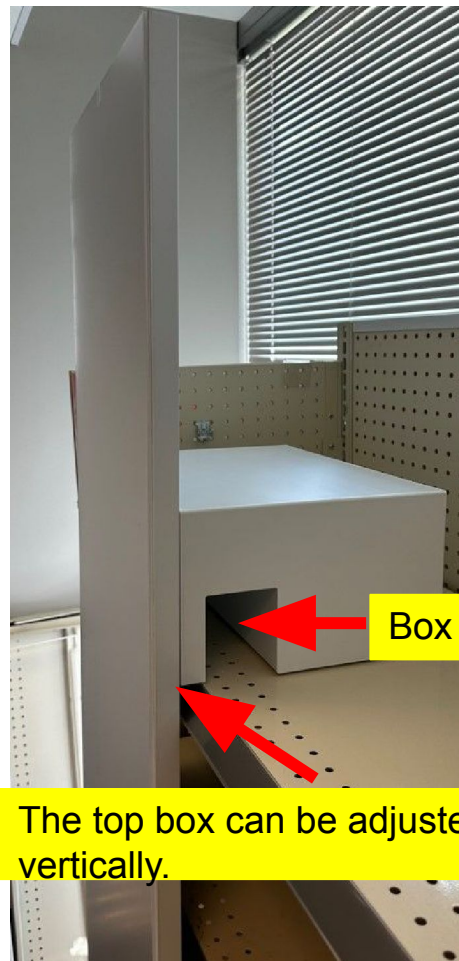
Installation

Step 5: Bottom Shelf Configuration

It is imperative that the bottom portion of the signholder frame be positioned behind the mylar present on the lowest shelf.



The installation of the bottom box takes place behind the mylar.



The top box can be adjusted vertically.

Vertical Marketing Boxes / Signholders

Rx Forward Fixtures

WIC No.: xxx-xxx-xxx

Part No./DWG No.: xxx-xxx-xxx

Walgreens

Installation

Completed installation

